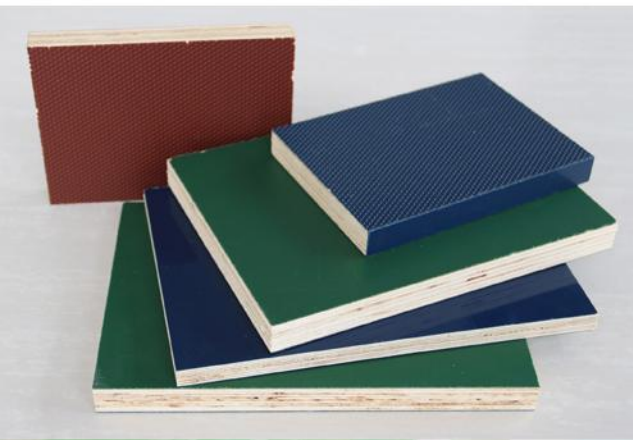
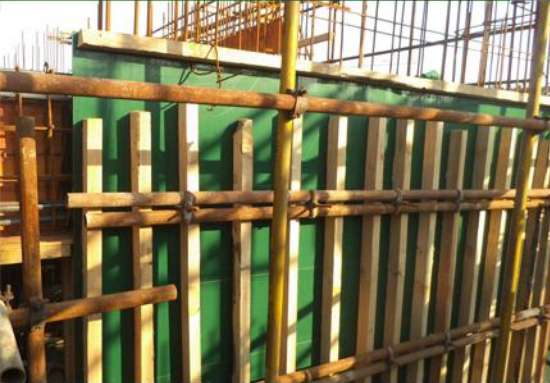
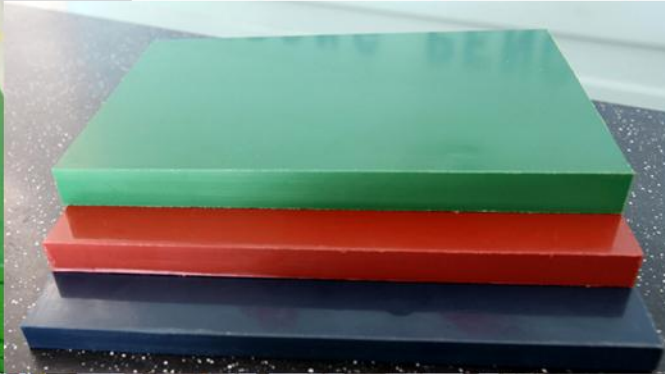


PP PLASTIC PLYWOOD



it's coated with PP plastic by imported PUR glue, which have a better strength and resistance to abrasion, water, heat, and chemical than normal phenolic black or brown film.

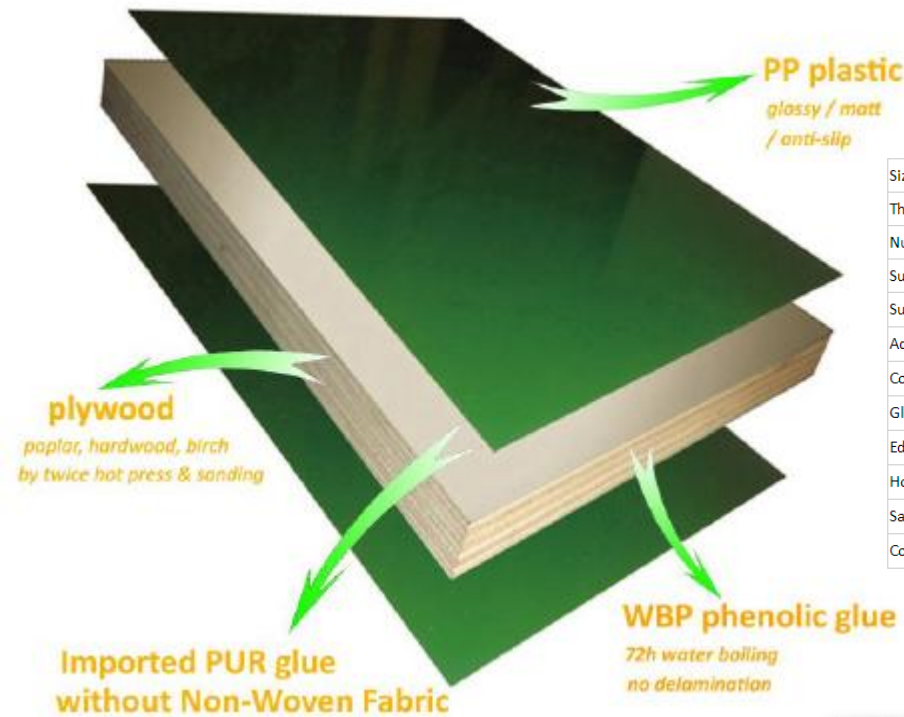
From feedback on site, it's reused 30 times at least, it plus 150 times at least if it's used in meal frame as formwork panel.



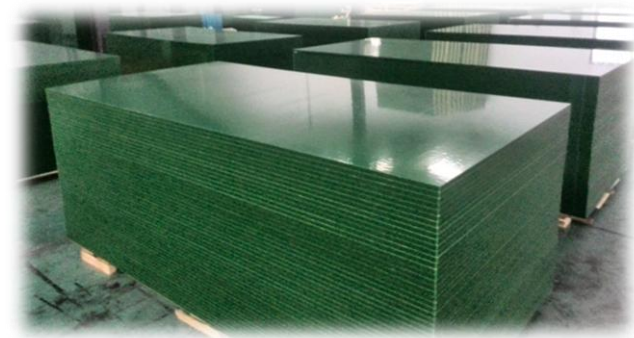
a coated plywood for concrete formwork

- ✧ reusable 30-150 times according to different site practices
- ✧ excellent combination of plastic and plywood in performance
- ✧ quick dismantling without concrete release agent & nice concrete finish without rework
- ✧ easy cleaning by water without oil treatment
- ✧ customized size is available

PP PLASTIC PLYWOOD



Size	1220x2440mm, 1250x2500mm, etc
Thickness	12mm, 15mm, 18mm, 21mm, etc
Number of plies	7, 9, 11, 13, etc
Surface	PP plastic
Surface finish	glossy / matt / anti-slip
Adhesive of surface	imported PUR glue from America
Core	poplar, eucalyptus, imported hardwood, birch, etc
Glue of based board	WBP phenolic, 72h immersion in boiling water without delamination
Edges	coating by PP plastic
Hot press	twice
Sanding	both sides
Color	green, blue, red, etc



COLUMN FORMWORK



made of high quality poplar plywood panel, which is coated with PP plastic inside and phenolic film outside.

the accessory is adjustable according to panel size, it's ok to be sold separately.

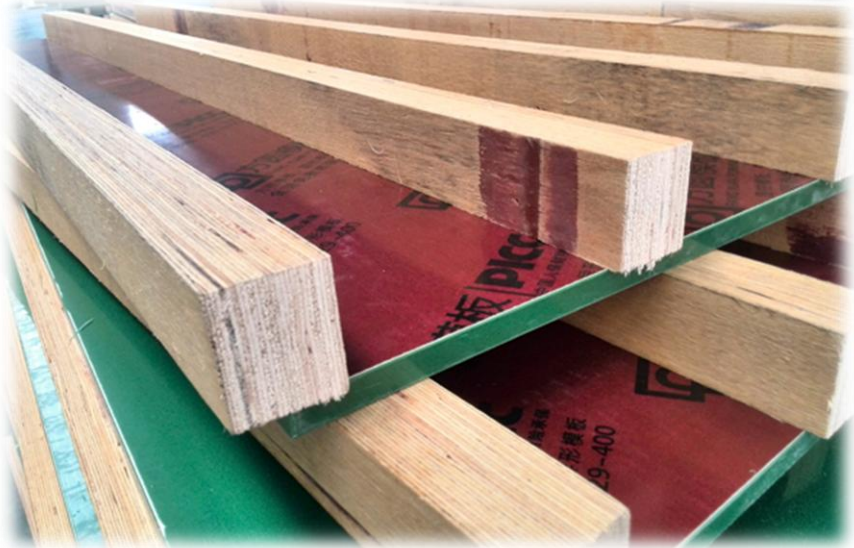
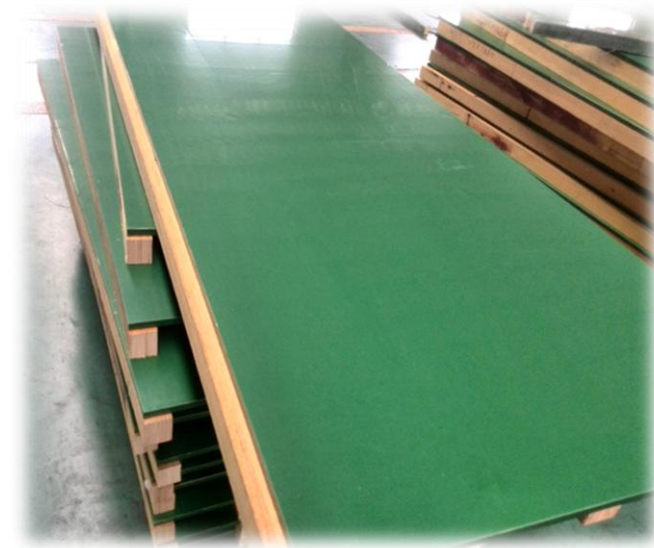


From feedback on site, it is reused 30 times at least.



- ✘ accurate size of columns
- ✘ fast installation by hand
- ✘ seamless joining prevent the leakage of concrete
- ✘ quick dismantling without concrete release agent
- ✘ nice concrete finish without rework
- ✘ customized size is available

COLUMN FORMWORK



Installation

four piece of panels are joined together, the edges match seamlessly, fix the steel frames horizontally



Panel	Coating inside	Glossy PP plastic
	Coating outside	Red phenolic film with logo
	Edges	Sealed by PP plastic
	Core	Poplar plywood with 15mm thickness, A grade
	Glue	Euro standard WBP, 50h water boiling
	Hot press	Two times
	Sanding	Two sides
Beam	Size	40x50mm
	Structure	LVL wood
	Surface	Waterproof painting in yellow color
Accessory	Style	Adjustable
	Surface	Galvanized
	Steel no.	6.0#, 10.0#

CIRCULAR COLUMN FORMWORK



*made of plywood, light in weight, easy handling by hands,
easy-cutting, quick dismantling, perfect concrete finish.*

SAVE 60% COST to replace traditional steel formwork !

the accessory is optioned or sold it separately.



CIRCULAR COLUMN FORMWORK



Specification

Diameter (mm)	Thickness (mm)	Height (m)	Pieces for column
300-550	15	3 Max	2
600-1200	18	3 Max	2
1250-1500	22	3 Max	2
1600-2400	22	2.4 Max	4-6

P.S: the height above 3m can be connected well by more pieces.